



# Cambridge International AS & A Level

---

**INFORMATION TECHNOLOGY**

**9626/04**

Paper 4 Advanced Practical

**October/November 2022**

**MARK SCHEME**

Maximum Mark: 90

---

**Published**

This mark scheme is published as an aid to teachers and candidates, to indicate the requirements of the examination. It shows the basis on which Examiners were instructed to award marks. It does not indicate the details of the discussions that took place at an Examiners' meeting before marking began, which would have considered the acceptability of alternative answers.

Mark schemes should be read in conjunction with the question paper and the Principal Examiner Report for Teachers.

Cambridge International will not enter into discussions about these mark schemes.

Cambridge International is publishing the mark schemes for the October/November 2022 series for most Cambridge IGCSE™, Cambridge International A and AS Level components and some Cambridge O Level components.

---

This document consists of **17** printed pages.

**Generic Marking Principles**

These general marking principles must be applied by all examiners when marking candidate answers. They should be applied alongside the specific content of the mark scheme or generic level descriptors for a question. Each question paper and mark scheme will also comply with these marking principles.

**GENERIC MARKING PRINCIPLE 1:**

Marks must be awarded in line with:

- the specific content of the mark scheme or the generic level descriptors for the question
- the specific skills defined in the mark scheme or in the generic level descriptors for the question
- the standard of response required by a candidate as exemplified by the standardisation scripts.

**GENERIC MARKING PRINCIPLE 2:**

Marks awarded are always **whole marks** (not half marks, or other fractions).

**GENERIC MARKING PRINCIPLE 3:**

Marks must be awarded **positively**:

- marks are awarded for correct/valid answers, as defined in the mark scheme. However, credit is given for valid answers which go beyond the scope of the syllabus and mark scheme, referring to your Team Leader as appropriate
- marks are awarded when candidates clearly demonstrate what they know and can do
- marks are not deducted for errors
- marks are not deducted for omissions
- answers should only be judged on the quality of spelling, punctuation and grammar when these features are specifically assessed by the question as indicated by the mark scheme. The meaning, however, should be unambiguous.

**GENERIC MARKING PRINCIPLE 4:**

Rules must be applied consistently, e.g. in situations where candidates have not followed instructions or in the application of generic level descriptors.

**GENERIC MARKING PRINCIPLE 5:**

Marks should be awarded using the full range of marks defined in the mark scheme for the question (however; the use of the full mark range may be limited according to the quality of the candidate responses seen).

**GENERIC MARKING PRINCIPLE 6:**

Marks awarded are based solely on the requirements as defined in the mark scheme. Marks should not be awarded with grade thresholds or grade descriptors in mind.

Question	Answer	Marks
1(a)	There is a clear attempt to determine the mark for each question.	1
	The whole set of student numbers, responses, marks and totals are seen in a spreadsheet.	1
	The correct values for the student Score/Total Marks are calculated.	1
	A database is created with results from the spreadsheet.	1
	A table in the database contains fields for the marks and score/total without the letter responses.	1
	There is evidence of a parameter criterion for selecting a class.	1
	There is a suitable prompt for the input.	1
	The required class can be selected.	1
	The selection includes the student names, class, marks, score/total (only).	1
	A form is created to show the student information, marks and score/total.	1
	The selection/filtering shows 33 records for FE1	1
	Form Header text is correct and reads 'Test 102 results for class:'	1
	The Student Class name is displayed as a field in the header (gets the focus when clicked on).	1
	The class name in the header is dynamic; (matches the class name shown in student information).	1
	The correct 4 Student information fields display the correct data (ID, given name, surname, class).	1
	The student information labels, and fields size/format/position/alignment are correct.	1
	25 marks fields are displayed (not the a, b, c question responses).	1
	The score/total field is displayed.	1
	The 26 (marks+ score) fields are displayed in 2 equal columns.	1
	All field sizes adjusted to fit the content.	1
	The format/position/alignment of all labels and fields are consistent and correct.	1
	The correct scores/totals are seen for the whole set of selected students.	1
The correct Pass, Resit, Retake Course results are seen for the whole selection.	1	
The results text is seen in the correct place with no label or outlines.	1	

Question	Answer	Marks
1(a)	The result text matches score for the whole selection.	1
	The 'Pass' text is green.	1
	The 'Resit/Retake the course' text is red.	1
		<b>27</b>
1(b)	There is evidence of an attempt to identify incorrect questions.	1
	There is evidence of an attempt to create a list of incorrect questions.	1
	Each incorrect question includes "Q" prefix, e.g. Q1, Q2 etc.	1
	A complete set of the incorrect questions is seen in a delimited contiguous list.	1
	The merge document contains mergefields and prompts for linked data.	1
	The date is shown as a field in the correct format (dd MMMM – yyyy)	1
	The Student_ID mergefield is inserted.	1
	The full name (GivenName Surname) mergefield(s) are inserted.	1
	The Class mergefield is inserted.	1
	The spacing of the ID, Names, Class block is correct/suitable.	1
	The student Score/Total mergefield is inserted.	1
	Conditional mergefields are inserted to display the correct 'Pass', 'Resit', 'Retake...' results.	1
	The mergefields uses correct criteria for the results.	1
	The correct three text options are used only once in the mergefields.	1
	The conditional mergefields are in a single nest.	1
	A conditional mergefield is inserted for the "Answered correctly/incorrectly text".	1
	A single criterion is used the display the text.	1
	The text is correct and matches the criterion.	1
	A mergefield to display the list of incorrect questions is used.	1
	The merge field to display the text and the list are nested.	1
The letters merged into an editable document.	1	
The are 33 letters in the document (Filtered for FE1).	1	
Each letter displays the correct Score/Total	1	

Question	Answer	Marks
1(b)	Each letters displays the correct result "Pass/Resit/Retake...".	1
	The text "You answered all the questions correctly" is displayed for Jessica .	1
	... The text "You answered the following questions incorrectly" is displayed for all others.	1
	A list of errors is displayed on all letters except for Jessica.	1
	... All letters are complete and fit for purpose. (All spelling, contents, formatting and spacing is correct and appropriate).	1
		<b>28</b>

Question	Answer	Mark
2	The plane Fuselage (as distinct from wings, tail, nose) has the correct shape (4 joints, no curves/gaps) and has a continuous thin outline.	1
	The wings are distinct from the fuselage and have the correct shape. The first wing has a curved leading edge and both wings have a continuous thin outline.	1
	The tail area is complete with the correct components and shape. There are 2 distinct tail wings, both with continuous thin outlines.	1
	The nose and propeller have the correct shape. The cone is symmetrical, curved, black and pointed. The propellor is grey.	1
	The cockpit is the correct shape. The top is straight, in line with the fuselage. The sides are slanted, the bottom is curved and all have continuous thin outlines.	1
	The roundel design on the fuselage is correct. There is a black, circle with a thin outline; the number 42 is place centrally with the correct proportions.	1
	The position and the perspective of the roundel on both wings is suitable. The roundels are angled along the axis of the wing and both have suitable horizontal perspectives.	1
	The banner is connected to the plane and has the correct shape. There are 2 evenly spaced peaks/humps; both ends are vertical.	1
	The text on the banner is correct. The path of the letters follows the shape of the banner. The text is central.	1
	The colour of the plane is a consistent shade of yellow. The banner is a consistent shade of red. The text is black.	1
		<b>10</b>

Question	Answer	Marks
3	The frame size of the animation is set to 1280 px by 720 px	1
	The correct TTC building image is used. The image spans the bottom of the frame. The background remains complete throughout the animation.	1
	The Sky.png image is applied as a layer. The image fills the rest of the frame in the position shown in the question paper.	1
	The Cloud.png image is applied as a layer in the correct position. It covers approximately three quarters of the frame without a gap at the left.	1
	The plane enters with a downward path and orientation.	1
	The plane passes behind the cloud on both passes.	1
	... The plane can be seen through the cloud.	1
	The plane follows a suitable looped path.	1
	... The plane remains suitably oriented during all parts of the looped path.	1
	The plane re-enters from the right with a downward path and orientation after 1 second.	1
	The plane follows the curved path and is suitably oriented at all times.	1
	Each path takes 6 seconds.	1
	The plane exits the frame completely after each path.	1
	The plane travels smoothly at an even speed at all times.	1
The animation restarts after 1 second. There is no discernible resetting.	1	
		15

Question	Answer	Mark
4	All MouseOvers work. Each cell displays the alternative text.	1
	All MouseOuts work. Each cell displays the default text.	1
	All MouseOver text is correct.	1
	All MouseOut text is correct and matches the original default text.	1
	The correct onmouseover function names are used and match those shown in the html. All three functions, Sc1(), CompSci1() and Eng1() are used.	1
	The correct onmouseout function names are used and match those shown in the html. All three functions, Sc2(), CompSci2() and Eng2() are used.	1

<b>Question</b>	<b>Answer</b>	<b>Marks</b>
4	The document.getElementById(Placeholder id) method is used in each function.	1
	The .innerHTML = "Text or variable" element is used in each function.	1
	At least one annotation inserted.	1
	The web page is intact and loads/refreshes without errors.	1
		<b>10</b>

**Exemplar solutions**

**Task 1(a)**

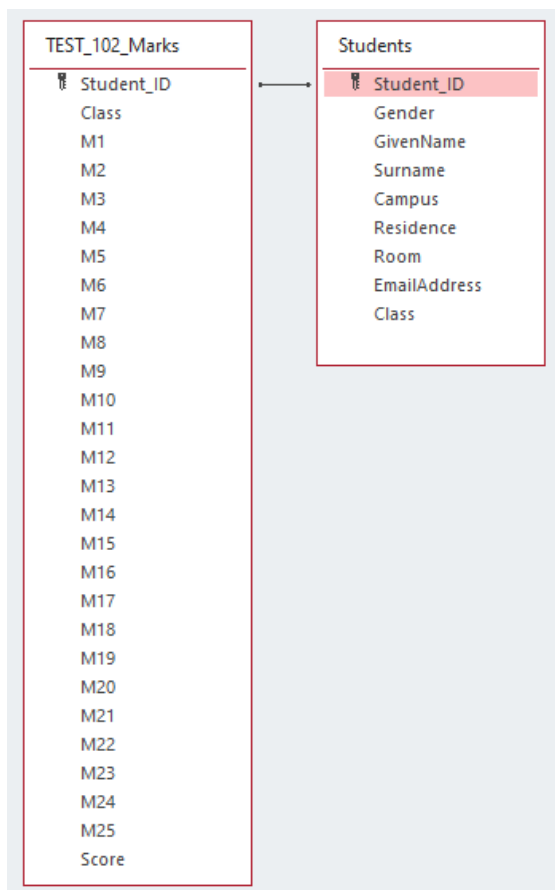
	A	B	C	D	E	F	G	H	I	J	K	L	M	N	O	P	Q	R	S	T	U	V	W	X	Y	Z	AA
1	Student_ID	Q1	Q2	Q3	Q4	Q5	Q6	Q7	Q8	Q9	Q10	Q11	Q12	Q13	Q14	Q15	Q16	Q17	Q18	Q19	Q20	Q21	Q22	Q23	Q24	Q25	Class
2	232	e	d	d	d	b	b	d	e	d	e	b	d	e	e	a	a	a	d	d	d	a	b	b	a	a	FE1
3	233	d	d	a	d	b	b	d	e	d	e	b	d	e	a	c	e	d	b	d	c	c	b	a	c	a	FE3
4	234	a	d	b	d	b	b	d	e	d	e	b	d	e	b	d	e	b	c	a	a	a	a	d	d	e	FE5
5	235	b	d	c	d	c	c	b	d	b	a	c	b	c	b	d	e	a	d	d	d	a	b	b	a	a	FE3
6	236	c	c	b	e	c	e	e	a	a	c	c	d	a	e	e	e	e	c	e	c	e	d	b	b	c	FE2
151	386	a	a	c	c	e	d	b	e	d	b	b	d	e	e	a	a	a	d	d	b	a	c	e	d	d	FE4
152	390	e	b	e	d	d	b	b	d	d	c	b	d	e	e	a	a	a	d	d	d	a	b	e	b	e	FE4
153	396	a	b	e	c	c	a	b	e	e	b	d	e	e	a	a	a	d	d	c	e	d	c	b	d	FE4	
154	397	b	c	c	d	e	c	d	e	b	b	b	d	e	e	a	a	a	d	d	e	c	e	e	d	a	FE5
155	399	d	d	b	e	b	c	e	c	d	d	b	d	e	e	a	a	a	d	d	e	c	b	e	b	d	FE5

AB	AC	AD	AE	AF	AG	AH	AI	AJ	AK	AL	AM	AN	AO	AP	AQ	AR	AS	AT	AU	AV	AW	AX	AY	AZ	BA	Score
1	2	3	4	5	6	7	8	9	10	11	12	13	14	15	16	17	18	19	20	21	22	23	24	25	25	
1	1	1	1	1	1	1	1	1	1	1	1	1	1	1	1	1	1	1	1	1	1	1	1	1	1	1
0	1	0	1	1	1	1	1	1	1	1	0	0	1	0	0	0	0	0	1	0	0	1	0	0	1	12
0	1	0	1	1	1	1	1	1	1	1	1	1	1	0	0	0	0	0	0	1	0	1	0	0	0	12
0	1	0	1	0	0	0	0	0	0	0	0	0	0	0	0	0	1	1	1	1	1	1	1	1	1	11
0	0	0	0	0	0	0	0	0	0	0	1	0	1	0	0	0	0	0	0	0	0	0	1	0	0	3
0	1	0	0	1	0	0	0	1	0	1	1	1	1	1	1	1	1	1	1	0	0	1	0	0	0	13

There is a clear attempt to determine the mark for each question.	<b>1</b>
The whole set of student numbers, responses, marks and totals are seen in a spreadsheet.	<b>1</b>
The correct values for the student Score/Total Marks are calculated.	<b>1</b>



A database is created with results from the spreadsheet.	<b>1</b>
A table in the database contains fields for the marks and score/total without the letter responses.	<b>1</b>



There is evidence of a parameter criterion for selecting a class.	<b>1</b>
There is a suitable prompt for the input.	<b>1</b>
The required class can be selected.	<b>1</b>

Student ID	GivenName	Surname	Class	M1	M2	M3	M4	M5	M6	M7	M8	M9	M10	M11	M12	M13	M14	M15	M16	M17	M18	M19	M20	M21	M22	M23	M24	M25	Score	
232	Jessica	Hughes	FE1	1	1	1	1	1	1	1	1	1	1	1	1	1	1	1	1	1	1	1	1	1	1	1	1	1	25	
238	Michael	Phillips	FE1	0	1	1	1	1	1	1	1	0	0	1	1	0	0	0	0	0	1	1	0	0	0	0	0	0	1	12
252	Ellis	Saunders	FE1	1	0	0	0	0	0	1	0	0	1	1	1	0	0	0	1	1	1	1	1	1	1	1	1	1	15	
254	Samantha	Chapman	FE1	0	0	0	1	1	0	0	0	1	0	0	0	0	0	1	0	1	1	1	1	1	1	1	1	1	13	
258	Millie	Glover	FE1	0	1	0	1	0	0	0	0	0	0	0	1	0	0	1	0	0	1	1	1	1	1	1	1	1	12	
260	Lydia	Bartlett	FE1	0	1	0	0	0	0	1	0	1	0	0	0	0	1	0	0	0	1	1	1	1	1	1	1	1	12	
264	Noah	Chambers	FE1	1	0	0	0	0	0	0	0	1	1	0	1	0	0	0	0	0	1	1	1	1	1	1	1	1	12	
266	Kai	Alexander	FE1	0	0	0	0	0	0	1	0	0	0	0	0	0	0	0	0	1	0	1	1	1	1	1	1	1	10	
272	Aaliyah	Flynn	FE1	0	0	0	0	0	1	0	0	0	0	0	0	0	0	0	0	1	0	1	0	0	0	0	0	0	2	
278	Millie	Baldwin	FE1	0	0	0	0	0	0	0	0	0	0	0	0	0	0	0	0	1	1	1	1	1	1	1	1	0	7	
279	Leah	Reid	FE1	0	0	0	0	0	1	0	0	0	1	0	0	0	0	0	0	0	1	0	0	0	1	0	1	0	5	
282	Skye	Atkins	FE1	0	0	0	0	0	1	0	0	0	0	0	1	0	0	1	0	1	0	0	0	1	0	0	0	0	5	
293	Callum	Stephens	FE1	0	0	0	1	0	0	1	0	1	0	1	0	1	0	0	0	1	0	1	0	0	0	1	1	1	10	
294	Ruby	Burns	FE1	1	0	0	0	0	0	0	0	0	0	0	0	0	0	0	0	0	1	0	0	0	1	0	0	0	3	
300	Lilly	Potts	FE1	0	1	0	0	0	1	1	1	1	1	1	1	1	1	1	0	0	1	0	1	0	0	0	0	0	13	
301	Sienna	Holland	FE1	0	0	0	0	0	0	1	1	1	1	1	1	1	1	1	0	1	0	0	0	1	1	0	0	0	12	
306	Rhys	Manning	FE1	0	0	0	0	0	1	1	1	1	1	1	1	1	1	1	0	1	0	0	0	1	1	0	0	0	12	
317	Luke	Vincent	FE1	0	1	1	1	1	1	1	0	0	1	1	0	0	0	0	1	0	0	0	0	0	0	0	1	0	1	11
320	Katie	Greenwood	FE1	0	0	0	0	1	0	0	1	0	0	1	0	0	0	0	0	0	1	0	1	0	1	0	0	0	5	
323	Ewan	Mills	FE1	0	0	1	0	0	0	0	0	0	0	1	0	0	1	0	0	1	1	1	1	1	1	1	0	0	10	
324	Jack	Collier	FE1	0	1	0	0	1	0	0	0	0	1	0	0	0	0	1	0	0	0	0	0	0	0	1	1	0	6	
325	Sebastian	Bull	FE1	1	0	1	1	0	0	0	0	0	0	0	0	0	0	0	0	0	0	0	1	0	0	1	0	0	6	
326	Charlie	Leonard	FE1	1	0	0	0	0	1	0	0	0	0	0	0	0	1	0	0	0	1	0	0	0	0	0	0	1	5	
333	Georgia	Allan	FE1	0	1	1	1	1	1	1	0	1	1	0	0	1	1	0	0	1	0	0	1	0	0	0	0	0	11	
334	Emma	Chadwick	FE1	0	0	0	0	1	0	0	1	0	0	0	0	0	1	0	1	0	0	0	0	0	0	0	0	0	4	
335	Georgina	Bradley	FE1	0	1	0	0	1	0	0	0	1	0	0	1	1	0	0	0	0	0	0	1	0	1	0	0	0	7	
343	Natasha	Bennett	FE1	0	0	0	0	1	0	0	0	0	0	1	0	1	0	0	0	1	0	0	0	0	0	0	1	0	5	
346	Sarah	Talbot	FE1	0	1	1	1	1	1	0	0	0	0	1	1	1	0	0	0	1	1	1	0	0	0	1	0	0	12	
347	Eleanor	Walton	FE1	0	1	1	1	1	1	0	1	0	0	1	0	0	1	1	0	0	0	0	0	0	0	1	1	1	12	
349	Rebecca	Bruce	FE1	1	1	0	0	0	0	0	0	1	0	0	0	0	0	0	0	0	1	0	1	0	1	0	0	0	7	
354	Oscar	Potts	FE1	0	0	0	1	0	1	0	0	0	1	0	1	1	0	0	0	0	0	0	0	0	1	0	1	1	8	
362	Lauren	Burgess	FE1	0	1	1	1	1	1	0	0	0	0	1	1	1	1	1	1	1	1	1	1	0	0	0	0	0	14	
365	Alex	Robertson	FE1	1	1	0	0	0	0	1	0	0	0	0	0	0	0	0	0	0	0	0	0	0	0	0	0	0	3	

The selection includes the student names, class, marks, score/total (only). 1

Test 102 results for class: FE1	Test 102 results for class: FE3	Test 102 results for class: FE5																																																																																																																																																
Student_ID <input type="text" value="232"/> Given name <input type="text" value="Jessica"/> Surname <input type="text" value="Hughes"/> Class <input type="text" value="FE1"/> <b>PASS</b>	Student_ID <input type="text" value="233"/> Given name <input type="text" value="Mollie"/> Surname <input type="text" value="Cooke"/> Class <input type="text" value="FE3"/> <b>Resit Test</b>	Student_ID <input type="text" value="234"/> Given name <input type="text" value="Dylan"/> Surname <input type="text" value="Akhtar"/> Class <input type="text" value="FE5"/> <b>Resit Test</b>																																																																																																																																																
<b>Question/Marks</b> <table border="1"> <tr><td>Q1</td><td>1</td><td>Q14</td><td>1</td></tr> <tr><td>Q2</td><td>1</td><td>Q15</td><td>1</td></tr> <tr><td>Q3</td><td>1</td><td>Q16</td><td>1</td></tr> <tr><td>Q4</td><td>1</td><td>Q17</td><td>1</td></tr> <tr><td>Q5</td><td>1</td><td>Q18</td><td>1</td></tr> <tr><td>Q6</td><td>1</td><td>Q19</td><td>1</td></tr> <tr><td>Q7</td><td>1</td><td>Q20</td><td>1</td></tr> <tr><td>Q8</td><td>1</td><td>Q21</td><td>1</td></tr> <tr><td>Q9</td><td>1</td><td>Q22</td><td>1</td></tr> <tr><td>Q10</td><td>1</td><td>Q23</td><td>1</td></tr> <tr><td>Q11</td><td>1</td><td>Q24</td><td>1</td></tr> <tr><td>Q12</td><td>1</td><td>Q25</td><td>1</td></tr> </table>	Q1	1	Q14	1	Q2	1	Q15	1	Q3	1	Q16	1	Q4	1	Q17	1	Q5	1	Q18	1	Q6	1	Q19	1	Q7	1	Q20	1	Q8	1	Q21	1	Q9	1	Q22	1	Q10	1	Q23	1	Q11	1	Q24	1	Q12	1	Q25	1	<b>Question/Marks</b> <table border="1"> <tr><td>Q1</td><td>0</td><td>Q14</td><td>0</td></tr> <tr><td>Q2</td><td>1</td><td>Q15</td><td>0</td></tr> <tr><td>Q3</td><td>0</td><td>Q16</td><td>0</td></tr> <tr><td>Q4</td><td>1</td><td>Q17</td><td>0</td></tr> <tr><td>Q5</td><td>1</td><td>Q18</td><td>0</td></tr> <tr><td>Q6</td><td>1</td><td>Q19</td><td>1</td></tr> <tr><td>Q7</td><td>1</td><td>Q20</td><td>0</td></tr> <tr><td>Q8</td><td>1</td><td>Q21</td><td>0</td></tr> <tr><td>Q9</td><td>1</td><td>Q22</td><td>1</td></tr> <tr><td>Q10</td><td>1</td><td>Q23</td><td>0</td></tr> <tr><td>Q11</td><td>0</td><td>Q24</td><td>0</td></tr> <tr><td>Q12</td><td>0</td><td>Q25</td><td>1</td></tr> </table>	Q1	0	Q14	0	Q2	1	Q15	0	Q3	0	Q16	0	Q4	1	Q17	0	Q5	1	Q18	0	Q6	1	Q19	1	Q7	1	Q20	0	Q8	1	Q21	0	Q9	1	Q22	1	Q10	1	Q23	0	Q11	0	Q24	0	Q12	0	Q25	1	<b>Question/Marks</b> <table border="1"> <tr><td>Q1</td><td>0</td><td>Q14</td><td>0</td></tr> <tr><td>Q2</td><td>1</td><td>Q15</td><td>0</td></tr> <tr><td>Q3</td><td>0</td><td>Q16</td><td>0</td></tr> <tr><td>Q4</td><td>1</td><td>Q17</td><td>0</td></tr> <tr><td>Q5</td><td>1</td><td>Q18</td><td>0</td></tr> <tr><td>Q6</td><td>1</td><td>Q19</td><td>0</td></tr> <tr><td>Q7</td><td>1</td><td>Q20</td><td>0</td></tr> <tr><td>Q8</td><td>1</td><td>Q21</td><td>1</td></tr> <tr><td>Q9</td><td>1</td><td>Q22</td><td>0</td></tr> <tr><td>Q10</td><td>1</td><td>Q23</td><td>0</td></tr> <tr><td>Q11</td><td>1</td><td>Q24</td><td>0</td></tr> <tr><td>Q12</td><td>1</td><td>Q25</td><td>0</td></tr> </table>	Q1	0	Q14	0	Q2	1	Q15	0	Q3	0	Q16	0	Q4	1	Q17	0	Q5	1	Q18	0	Q6	1	Q19	0	Q7	1	Q20	0	Q8	1	Q21	1	Q9	1	Q22	0	Q10	1	Q23	0	Q11	1	Q24	0	Q12	1	Q25	0
Q1	1	Q14	1																																																																																																																																															
Q2	1	Q15	1																																																																																																																																															
Q3	1	Q16	1																																																																																																																																															
Q4	1	Q17	1																																																																																																																																															
Q5	1	Q18	1																																																																																																																																															
Q6	1	Q19	1																																																																																																																																															
Q7	1	Q20	1																																																																																																																																															
Q8	1	Q21	1																																																																																																																																															
Q9	1	Q22	1																																																																																																																																															
Q10	1	Q23	1																																																																																																																																															
Q11	1	Q24	1																																																																																																																																															
Q12	1	Q25	1																																																																																																																																															
Q1	0	Q14	0																																																																																																																																															
Q2	1	Q15	0																																																																																																																																															
Q3	0	Q16	0																																																																																																																																															
Q4	1	Q17	0																																																																																																																																															
Q5	1	Q18	0																																																																																																																																															
Q6	1	Q19	1																																																																																																																																															
Q7	1	Q20	0																																																																																																																																															
Q8	1	Q21	0																																																																																																																																															
Q9	1	Q22	1																																																																																																																																															
Q10	1	Q23	0																																																																																																																																															
Q11	0	Q24	0																																																																																																																																															
Q12	0	Q25	1																																																																																																																																															
Q1	0	Q14	0																																																																																																																																															
Q2	1	Q15	0																																																																																																																																															
Q3	0	Q16	0																																																																																																																																															
Q4	1	Q17	0																																																																																																																																															
Q5	1	Q18	0																																																																																																																																															
Q6	1	Q19	0																																																																																																																																															
Q7	1	Q20	0																																																																																																																																															
Q8	1	Q21	1																																																																																																																																															
Q9	1	Q22	0																																																																																																																																															
Q10	1	Q23	0																																																																																																																																															
Q11	1	Q24	0																																																																																																																																															
Q12	1	Q25	0																																																																																																																																															
Records: <input type="text" value="1 of 33"/> <input type="button" value="No Filter"/> <input type="button" value="Search"/>	Records: <input type="text" value="1 of 29"/> <input type="button" value="No Filter"/> <input type="button" value="Search"/>	Records: <input type="text" value="1 of 31"/> <input type="button" value="No Filter"/> <input type="button" value="Search"/>																																																																																																																																																

A form is created to show the student information, marks and score/total.	1
The selection/filtering shows 33 records for FE1	1
Form Header text is correct and reads <b>Test 102 results for class:'</b>	1
The Student Class name is displayed as a field in the header (gets the focus when clicked on).	1
The class name in the header is dynamic; (matches the class name shown in student information).	1
The correct 4 Student information fields display the correct data (ID, given name, surname, class).	1
The student information labels, and fields size/format/position/alignment are correct.	1
25 marks fields are displayed (not the a, b, c question responses).	1
The score/total field is displayed.	1
The 26 (marks+ score) fields are displayed in 2 equal columns.	1
All field sizes adjusted to fit the content.	1
The format/position/alignment of all labels and fields are consistent and correct.	1
The correct scores/totals are seen for the whole set of selected students.	1
The correct Pass, Resit, Retake Course results are seen for the whole selection.	1
The results text is seen in the correct place with no label or outlines.	1

The result text matches score for the whole selection.	1
The 'Pass' text is green.	1
The 'Resit/Retake the course' text is red.	1
	27

**Task 1(b)**

CA
List of Errors
Q1, Q3, Q11, Q12, Q14, Q15, Q16, Q17, Q18, Q20, Q21, Q23, Q24
Q1, Q3, Q14, Q15, Q16, Q17, Q18, Q19, Q20, Q22, Q23, Q24, Q25
Q1, Q3, Q5, Q6, Q7, Q8, Q9, Q10, Q11, Q12, Q13, Q14, Q15, Q16
Q1, Q2, Q3, Q4, Q5, Q6, Q7, Q8, Q9, Q10, Q11, Q13, Q15, Q16, Q17, Q18, Q19, Q20, Q21, Q22, Q24, Q25

There is evidence of an attempt to identify incorrect questions.	1
There is evidence of an attempt to create a list of incorrect questions.	1
Each incorrect question includes "Q" prefix, e.g. Q1, Q2 etc.	1
A complete set of the incorrect questions is seen in a delimited contiguous list.	1

Microsoft Word

Opening this document will run the following SQL command:

SELECT \* FROM "TEST\_102\_Resp\_marks\_ & Merge5" WHERE `Class` = 'FE1' ORDER BY `Score` DESC

Data from your database will be placed in the document. Do you want to continue?

*date field here - use dd MMMM - yyyy format*

e.g. 20 October – 2022

---

Student-ID: {MERGEFIELD "Student\_ID"}¶

Name: {MERGEFIELD Name}¶

Class: {MERGEFIELD "Class"}¶

Your score for test-102 was {MERGEFIELD "Score"}¶

{IF {MERGEFIELD Score} > 12 "This is a Pass mark." {IF {MERGEFIELD Score} < 10 "You will need to retake the course." "Please arrange to resit the test."}}¶

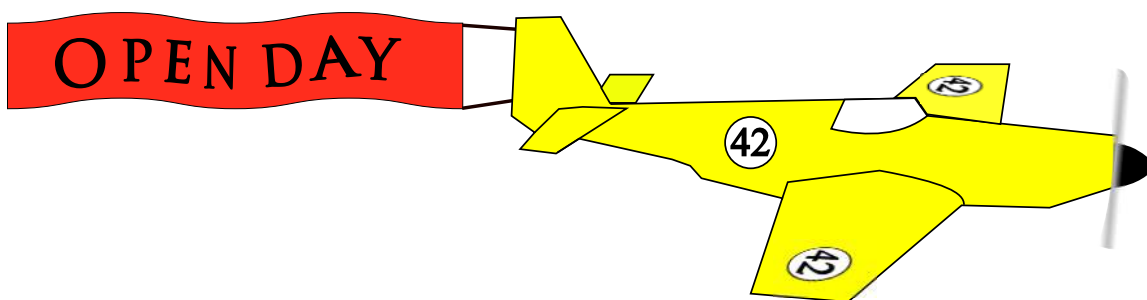
{IF {MERGEFIELD Errors} = "" "You answered all the questions correctly." "You answered the following questions incorrectly."}¶

{MERGEFIELD Errors}¶

The merge document contains mergefields and prompts for linked data.	<b>1</b>	Conditional mergefields are inserted to display the correct 'Pass', 'Resit', 'Retake...' results.	<b>1</b>
The date is shown as a field in the correct format ( <i>dd MMMM – yyyy</i> )	<b>1</b>	The mergefields uses correct criteria for the results.	<b>1</b>
The Student_ID mergefield is inserted.	<b>1</b>	The correct three text options are used only once in the mergefields.	<b>1</b>
The full name (GivenName Surname) mergefield(s) are inserted.	<b>1</b>	The conditional mergefields are in a single nest.	<b>1</b>
The Class mergefield is inserted.	<b>1</b>	A conditional mergefield is inserted for the "Answered correctly/incorrectly text".	<b>1</b>
The spacing of the ID, Names, Class block is correct/suitable.	<b>1</b>	A single criterion is used the display the text.	<b>1</b>
The student Score/Total mergefield is inserted.	<b>1</b>	The text is correct and matches the criterion.	<b>1</b>
		A mergefield to display the list of incorrect questions is used.	<b>1</b>
		The mergefield to display the text and the list are nested.	<b>1</b>

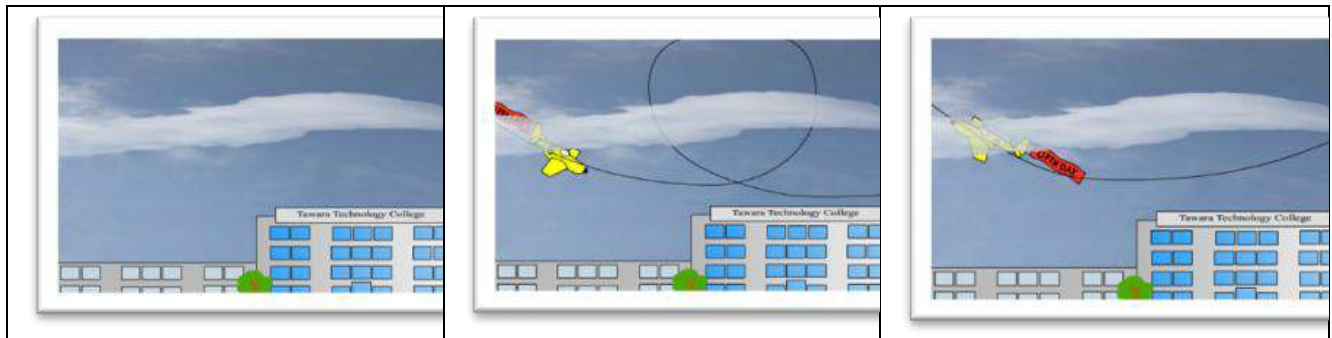
<p>Student Id: 232</p> <p>Name: Jessica Hughes</p> <p>Class: FE1</p> <p>Your score for Test_102 was 25.</p> <p>This is a Pass mark.</p> <p>You answered all the questions correctly.</p>	<p>Student Id: 252</p> <p>Name: Ellis Saunders</p> <p>Class: FE1</p> <p>Your score for Test_102 was 15.</p> <p>This is a Pass mark.</p> <p>You answered the following questions incorrectly. Q2, Q3, Q4, Q5, Q6, Q8, Q9, Q13, Q14, Q15</p>
<p>Student Id: 306</p> <p>Name: Rhys Manning</p> <p>Class: FE1</p> <p>Your score for Test_102 was 12.</p> <p>Please arrange to retake the test.</p> <p>You answered the following questions incorrectly. Q1, Q2, Q3, Q4, Q5, Q6, Q16, Q18, Q19, Q22, Q23, Q24, Q25</p>	<p>Student Id: 354</p> <p>Name: Oscar Potts</p> <p>Class: FE1</p> <p>Your score for Test_102 was 8.</p> <p>You will need to retake the course.</p> <p>You answered the following questions incorrectly. Q1, Q2, Q3, Q5, Q7, Q8, Q9, Q11, Q14, Q15, Q16, Q17, Q18, Q19, Q20, Q22, Q25</p>

The letters merged into an editable document.	1
The are 33 letters in the document (Filtered for FE1).	1
Each letter displays the correct Score/Total	1
Each letters displays the correct result "Pass/Resit/Retake...".	1
The text "You answered all the questions correctly" is displayed for Jessica .	1
... The text "You answered the following questions incorrectly" is displayed for all others.	1
A list of errors is displayed on all letters except for Jessica.	1
... All letters are complete and fit for purpose. (All spelling, contents, formatting and spacing is correct and appropriate).	1
	<b>28</b>

**Task 2**

The plane Fuselage (as distinct from wings, tail, nose) has the correct shape (4 joints, no curves/gaps) and has a continuous thin outline.	1
The wings are distinct from the fuselage and have the correct shape. The first wing has a curved leading edge and both wings have a continuous thin outline.	1
The tail area is complete with the correct components and shape. There are 2 distinct tail wings, both with continuous thin outlines.	1
The nose and propeller have the correct shape. The cone is symmetrical, curved, black and pointed. The propellor is grey.	1
The cockpit is the correct shape. The top is straight, in line with the fuselage. The sides are slanted, the bottom is curved and all have continuous thin outlines.	1
The roundel design on the fuselage is correct. There is a black, circle with a thin outline; the number 42 is place centrally with the correct proportions.	1
The position and the perspective of the roundel on both wings is suitable. The roundels are angled along the axis of the wing and both have suitable horizontal perspectives.	1
The banner is connected to the plane and has the correct shape. There are 2 evenly spaced peaks/humps; both ends are vertical.	1

The text on the banner is correct. The path of the letters follows the shape of the banner. The text is central.	<b>1</b>
The colour of the plane is a consistent shade of yellow. The banner is a consistent shade of red. The text is black.	<b>1</b>
	<b>10</b>

**Task 3**

The frame size of the animation is set to 1280px by 720px	<b>1</b>
The correct TTC building image is used. The image spans the bottom of the frame. The background remains complete throughout the animation.	<b>1</b>
The Sky.png image is applied as a layer. The image fills the rest of the frame in the position shown in the question paper.	<b>1</b>
The Cloud.png image is applied as a layer in the correct position. It covers approximately three quarters of the frame without a gap at the left.	<b>1</b>
The plane enters with a downward path and orientation.	<b>1</b>
The plane passes behind the cloud on both passes.	<b>1</b>
... The plane can be seen through the cloud.	<b>1</b>
The plane follows a suitable looped path.	<b>1</b>
... The plane remains suitably oriented during all parts of the looped path.	<b>1</b>
The plane re-enters from the right with a downward path and orientation after 1 second.	<b>1</b>
The plane follows the curved path and is suitably oriented at all times.	<b>1</b>
Each path takes 6 seconds.	<b>1</b>
The plane exits the frame completely after each path.	<b>1</b>
The plane travels smoothly at an even speed at all times.	<b>1</b>
The animation restarts after 1 second. There is no discernible resetting.	<b>1</b>
	<b>15</b>

**Task 4****<script>**

```
var Scitext1="Our Science faculty rates as one of the best in the world. Our award-winning staff include a Nobel prize winner and 2 winners of the prestigious Norma Dent Prize. With state-of-the-art equipment, including our own 'Collider', our research facilities are second to none.";
var Scitext2="MouseOver here for information about the Science faculty.";
```

```
var Comptext1="Our Computer facilities and resources are world beating. Students have full access to a network of innovative Quantum computers and can investigate all the answers to everything in the Universe."
var Comptext2="MouseOver here for information about the Computer Science faculty.";
```

```
var Engtext1="The Engineering Faculty is a world leader in the search for a perpetual motion machine and free energy. Recently we have received universal acclaim for improvements to the wheel.";
var Engtext2="MouseOver here for information about the Engineering faculty.";
```

```
// Insert code to display the correct MouseOver text
function Sci1()
{ document.getElementById("Science").innerHTML =Scitext1;}

function Sci2()
{ document.getElementById("Science").innerHTML = Scitext2;}

function CompSci1()
{ document.getElementById("ComputerScience").innerHTML =Comptext1;}

function CompSci2()
{ document.getElementById("ComputerScience").innerHTML = Comptext2;}

function Eng1()
{ document.getElementById("Engineering").innerHTML = Engtext1;}

function Eng2()
{ document.getElementById("Engineering").innerHTML = Engtext2;}


```

**</script>**

All MouseOvers work. Each cell displays the alternative text.	<b>1</b>
All MouseOuts work. Each cell displays the default text.	<b>1</b>
All MouseOver text is correct.	<b>1</b>
All MouseOut text is correct and matches the original default text.	<b>1</b>



The correct onmouseover function names are used and match those shown in the html. All three functions, Sc1(), CompSci1() and Eng1() are used.	<b>1</b>
The correct onmouseout function names are used and match those shown in the html. All three functions, Sc2(), CompSci2() and Eng2() are used.	<b>1</b>
The document.getElementById(Placeholder id) method is used in each function.	<b>1</b>
The .innerHTML = "Text or variable" element is used in each function.	<b>1</b>
At least one annotation inserted.	<b>1</b>
The web page is intact and loads/refreshes without errors.	<b>1</b>
	<b>10</b>